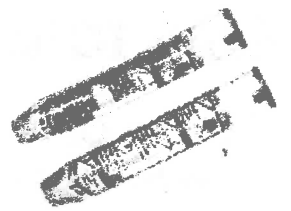


EPIPEN: DIRECTIONS for USE
Always follow the Emergency Action Plan
AND call 9-1-1!



1) Grasp unit with the **ORANGE** tip pointing downward.



2) Remove the **BLUE** activation cap.



3) Hold the **ORANGE** tip near the student's outer thigh.



4) Swing and firmly push the **ORANGE** tip against the outer thigh until a click or popping sound is heard.



5) **HOLD FIRMLY IN THIGH FOR 10 SECONDS.**

6) Remove the unit and **massage the area** for another 10 seconds. The **ORANGE** needle cover will extend to cover the needle for your protection from needle sticks.

7) **CONFIRM THAT 9-1-1 WAS CONTACTED.**
(The Epi-pen effects wear off in about 15 minutes.)

8) **Give the used Epi-pen to emergency responders when they arrive.**